



O'Connor Door

Finish Chart

605 (US3)



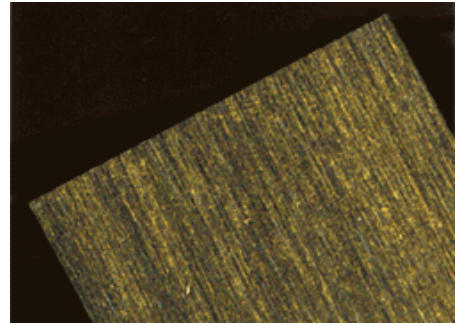
BRIGHT BRASS

606 (US4)



SATIN BRASS

609 (US5)



SATIN BRASS, BLACKEND

612 (US10)



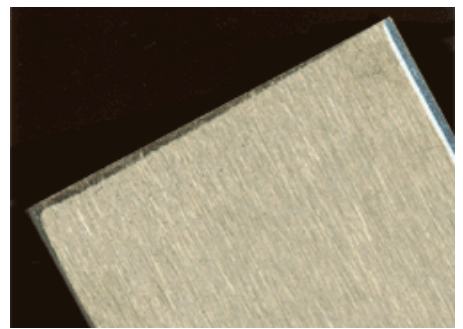
SATIN BRONZE

613 (US10B)



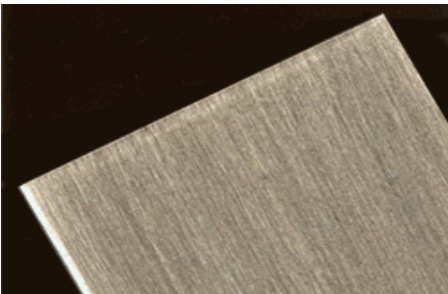
OIL RUBBED BRONZE

619 (US15)



SATIN NICKEL PLATED

620 (US15A)



ANTIQUE PEWTER

625 (US26)



BRIGHT CHROMIUM PLATED

626 (US26D)



SATIN CHROMIUM PLATED

689 (P28) (MAL)

690

691



O'Connor Door



ALUMINUM PAINTED

693



STATUARY BRONZE PAINTED

695 (P13) (M13)



LIGHT BRONZE PAINTED

696



BLACK PAINTED



DARK BRONZE PAINTED



SATIN BRASS PAINTED

Actual finish may vary slightly from above.