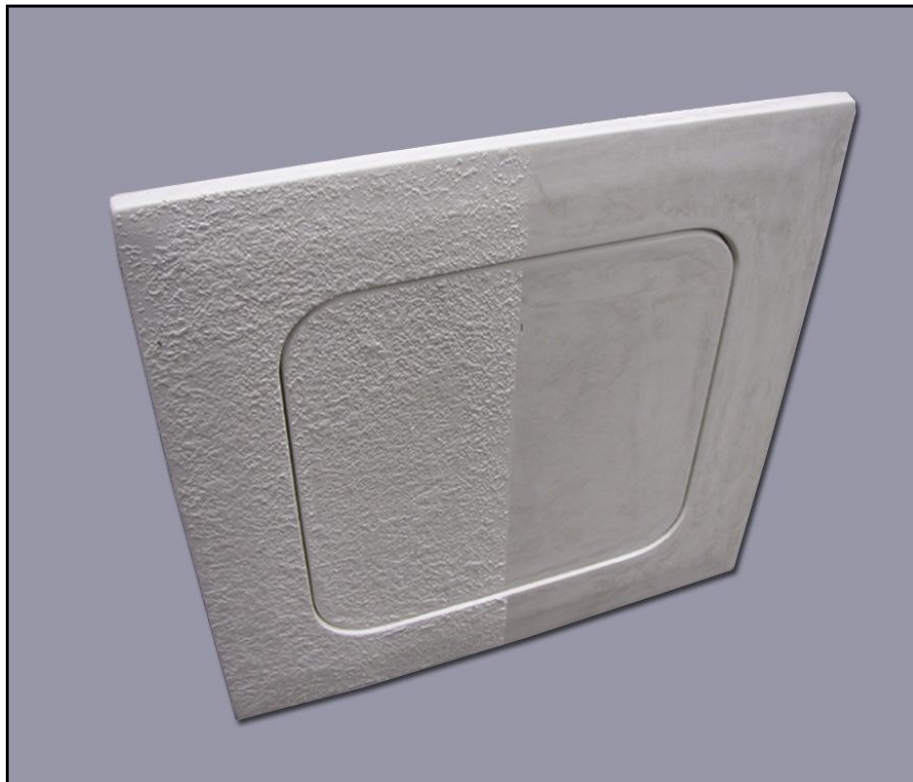


STEALTH[®]

ACCESS PANELS BY WIND-LOCK

E-Binder



800-872-5625

610-926-6815

www.stealthpanels.com

Wind-lock[®]
What you need. When you need it.

TABLE OF CONTENTS

• Stealth Brochure.....	2
• Stealth Standard Panels.....	4
• Stealth Round Panels.....	6
• Stealth Hinged Panels.....	8
• Basic Care & Instruction.....	10
• Specification Sheet.....	11
• Pictures.....	15
• EZ Quote Form.....	17



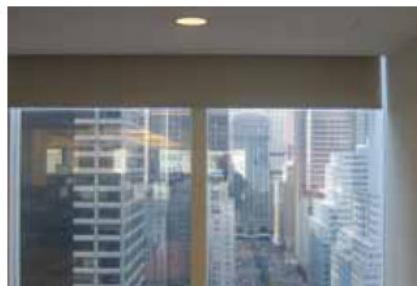
Retail



Residential



Hospitality



Commercial

It's all about what you can't see.

Stealth Access Panels are glass fiber reinforced gypsum (GFRG) panels designed to blend seamlessly into drywall ceilings and walls. The ceiling access panels consist of a surround frame with pre-spotted fastener holes and a drop-in door. Also available in round, when circular light fixtures, speakers or smoke detectors are being used to maintain the aesthetic theme in the design. Our hinged panels also consist of a surround frame with pre-spotted fastener holes with a concealed hinge and lockable door for both wall and ceiling applications. Available in multiple, standard, commercial and residential (drop-in style only) sizes, Stealth panels are perfect for jobs where access is required at regular intervals. Lightweight and easily textured, the panels can be used in both new and retrofit construction across unlimited applications. Their design helps contractors work smarter, faster and better. The residential models incorporate an energy saving gasket seal that keeps attic temperatures from infiltrating living space. Stealth Access Panels by Wind-lock® provide an aesthetically pleasing, "out of the closet" solution for a more attractive interior. It's the better way to do access panels!

PRODUCT FEATURES

- ▶ Tapered edge for tape joint
- ▶ Easily textured
- ▶ Lightweight
- ▶ Smooth round edge
- ▶ Single trade installation
- ▶ Blends into surrounding drywall
- ▶ No shrinkage
- ▶ No cracking
- ▶ Perfect for retrofit applications
- ▶ Reduce labor costs

HOW TO WORK WITH ACCESS PANELS



1. Frame the opening.



2. Mount Stealth surround with drywall screws.



3. Install drywall and place access panel in opening.



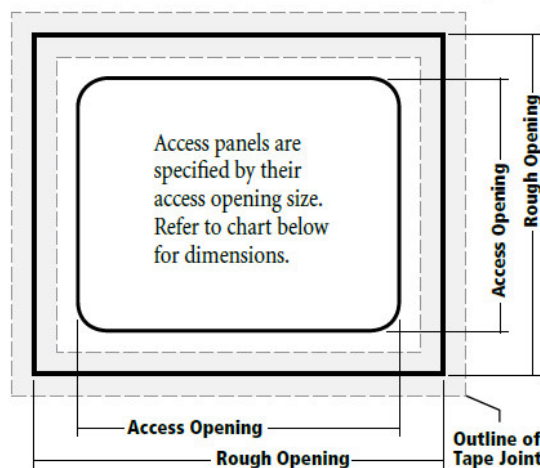
4. Tape and apply drywall compound.



5. Apply desired finish.

STEALTH PANELS TECHNICAL DATA

Shell Thickness	1/8" to 3/16"
Fastener Test Pull Out (wood stud)	525 lb avg.
Fastener Test Pull Out (metal stud)	215 lb avg.
Fastener Push Through Test	350 lb avg.
Fuel Contribution (ASTM E84-80)	0
Flame Spread (ASTM E84-80)	0
Smoke Index (ASTM E84-80)	5
Combustion (ASTM E84-80)	Non-combustible
Class A Non-Rated	—
CSI Code	CSI #08310



ORDERING INFORMATION

Part Code	Access Opening	Rough Opening
COMMERCIAL ACCESS PANELS		
TR-AP009*	9" x 9"	15" x 15"
TR-AP012*	12" x 12"	18" x 18"
TR-AP016*	16" x 16"	22" x 22"
TR-AP018*	18" x 18"	24" x 24"
TR-AP024*	24" x 24"	30" x 30"
RESIDENTIAL ACCESS PANELS (with gasket)		
TR-APGR2230*	22" x 30"	24" x 36"
TR-APGR3030*	30" x 30"	36" x 36"
SPECIALTY ROUND PANELS		
TR-RAP012*	12" diameter	18" x 18"
TR-RAP016*	16" diameter	22" x 22"
TR-RAP018*	18" diameter	24" x 24"
TR-RAP024*	24" diameter	30" x 30"
HINGED ACCESS PANELS		
TR-HAP009*	9" x 9"	15" x 15"
TR-HAP012*	12" x 12"	18" x 18"
TR-HAP016*	16" x 16"	22" x 22"
TR-HAP018*	18" x 18"	24" x 24"
TR-HAP024*	24" x 24"	30" x 30"

* Sold 2 per box. Custom sizes available. Call for more details.



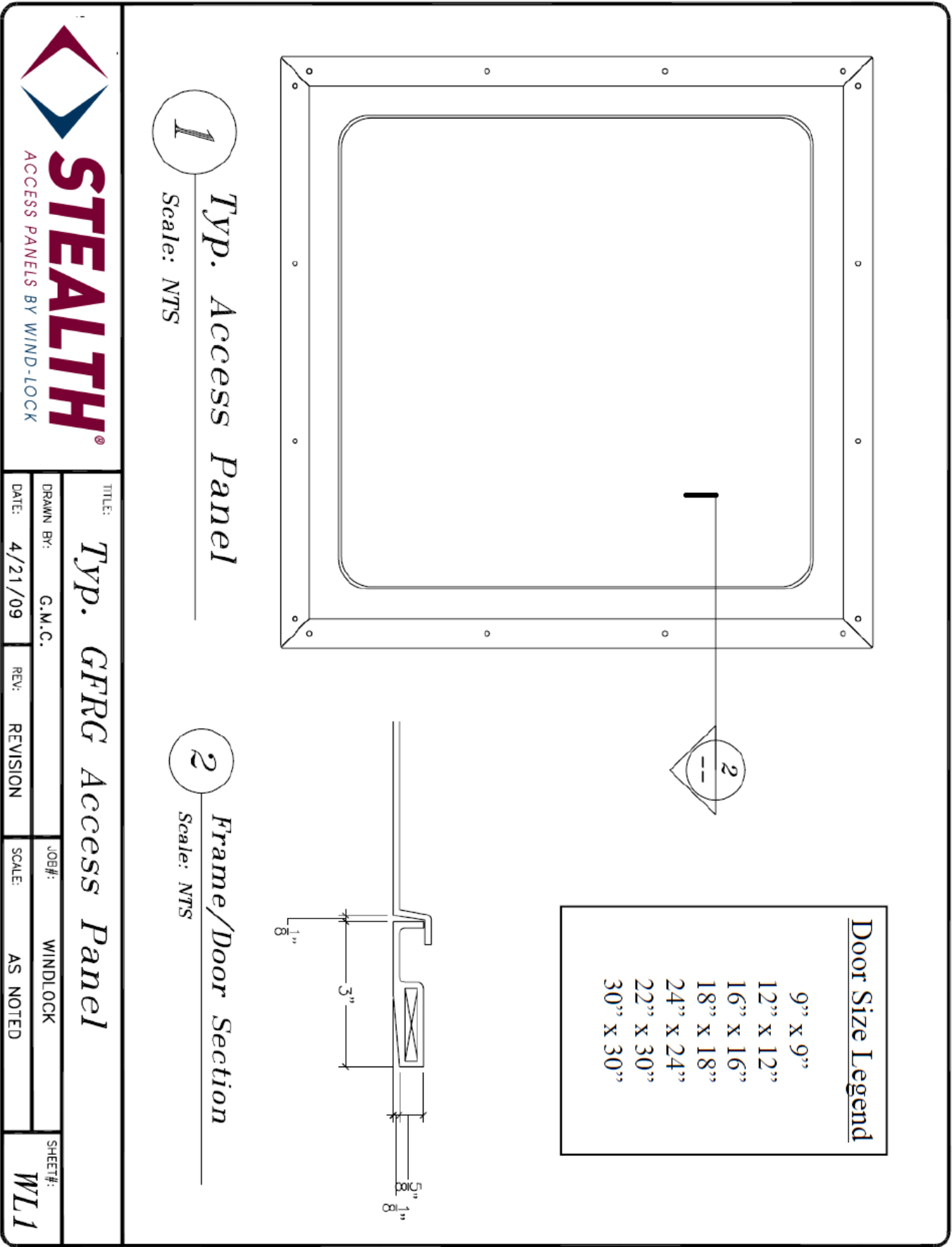
Stock to Dock Shipping Guarantee

Products highlighted in yellow are guaranteed to ship within 24 hours or freight costs are **FREE!** Larger orders may require additional lead times. Call for details.



Now available in Round and Hinged.

Standard Stealth Panel CAD Drawing



This drawing is the property of Wind-lock® Corp and shall not be reproduced, copied, lent or disposed of directly or indirectly nor used for any purpose other than that for which it is specifically furnished. Reproduction or use of this document without written permission of Wind-lock Corp® is illegal and will be prosecuted under the law.

Standard Stealth Panel Submittal Form

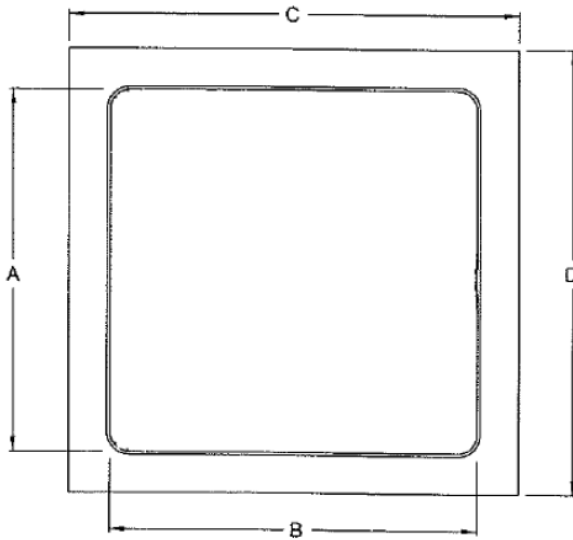


STEALTH[®]

ACCESS PANELS BY WIND-LOCK

Distributed By:

Qty	Access Opening	A	B	C	D
	9" x 9"	9"	9"	15"	15"
	12" x 12"	12"	12"	18"	18"
	16" x 16"	16"	16"	22"	22"
	18" x 18"	18"	18"	24"	24"
	24" x 24"	24"	24"	30"	30"
	22" x 30"-residential	22"	30"	36"	24"
	30" x 30"-residential	30"	30"	36"	36"

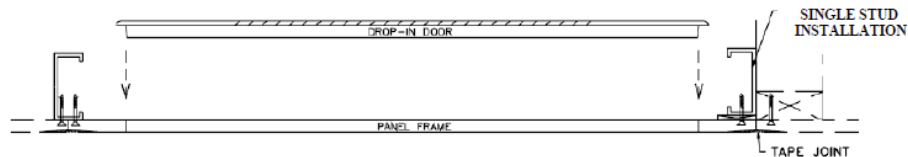


JOB NAME:

APPROVED BY:

CUSTOMER:

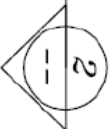
DATE:



Stealth Access Panels by Wind-lock[®] are made of GFRG (glass fiber reinforced gypsum) and consist of a surround frame with wood embedment and pre-spotted drill holes to take the guesswork out of installation. The residential panels also include an energy saving gasket to keep air from infiltrating the living space.

This submittal is the property of Wind-lock[®] Corp and shall not be reproduced, copied, lent or disposed of directly or indirectly nor used for any purpose other than that for which it is specifically furnished. Reproduction or use of this document without written permission of Wind-lock Corp[®] is illegal and will be prosecuted under the law.

6



12" diameter
16" diameter
18" diameter
24" diameter

Scale: NTS

Scale: NTS



TITLE:

SHEET#:

 $WL1$

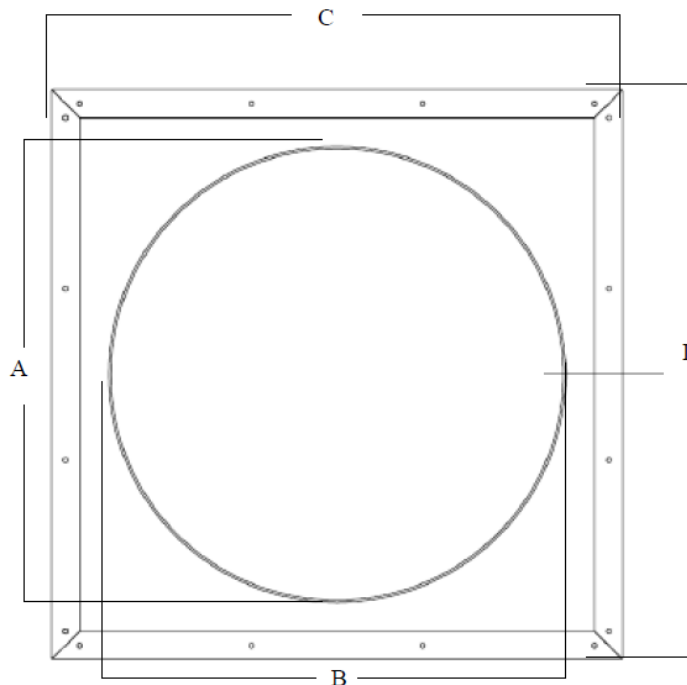
This drawing is the property of Wind-lock® Corp and shall not be reproduced, copied, lent or disposed of directly or indirectly nor used for any purpose other than that for which it is specifically furnished. Reproduction or use of this document without written permission of Wind-lock Corp® is illegal and will be prosecuted under the law.

Round Stealth Panel Submittal Form



STEALTH[®] Distributed By:
ACCESS PANELS BY WIND-LOCK

Qty	Access Opening	A	B	C	D
	12" x 12"	12" dia	12" dia	18"	18"
	16" x 16"	16" dia	16" dia	22"	22"
	18" x 18"	18" dia	18" dia	24"	24"
	24" x 24"	24" dia	24" dia	30"	30"

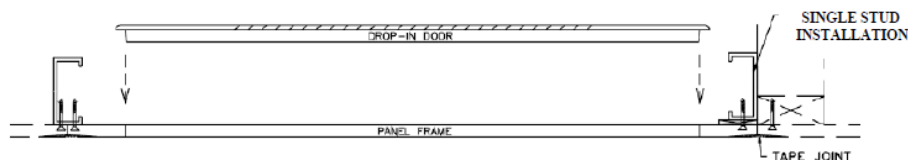


JOB NAME:

APPROVED BY:

CUSTOMER:

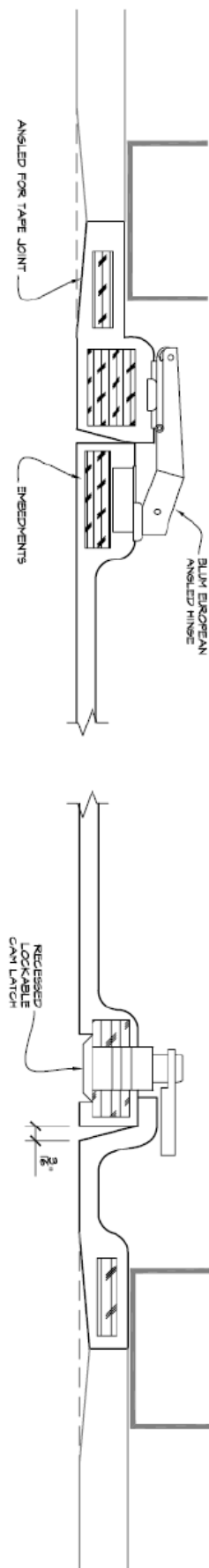
DATE:



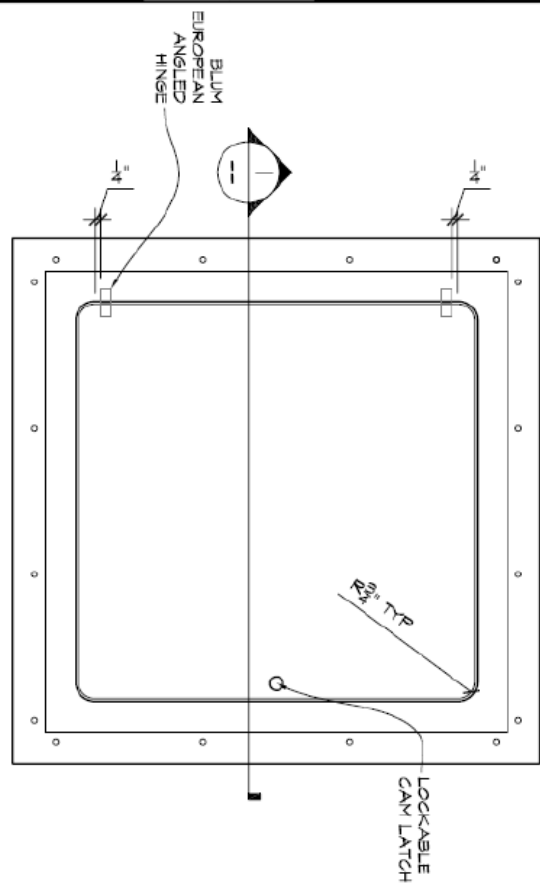
Stealth Access Panels by Wind-lock[®] are made of GFRG (glass fiber reinforced gypsum) and consist of a surround frame with wood embedment and pre-spotted drill holes to take the guesswork out of installation. The residential panels also include an energy saving gasket to keep air from infiltrating the living space.

This submittal is the property of Wind-lock[®] Corp and shall not be reproduced, copied, lent or disposed of directly or indirectly nor used for any purpose other than that for which it is specifically furnished. Reproduction or use of this document without written permission of Wind-lock Corp[®] is illegal and will be prosecuted under the law.

Hinged Stealth Panel CAD Drawing



1 SECTION VIEW
Scale: 6"=1'



2 REFLECTED PLAN
Scale: NTS

Door Size Legend	
9" x 9"	
12" x 12"	
16" x 16"	
18" x 18"	
24" x 24"	



TITLE: <i>European Hinged Access Panel</i>	
DRAWN BY: L.J.C.	JOB#:
DATE: 04-22-09	REV: .
SCALE: AS NOTED	SHEET#: HA2

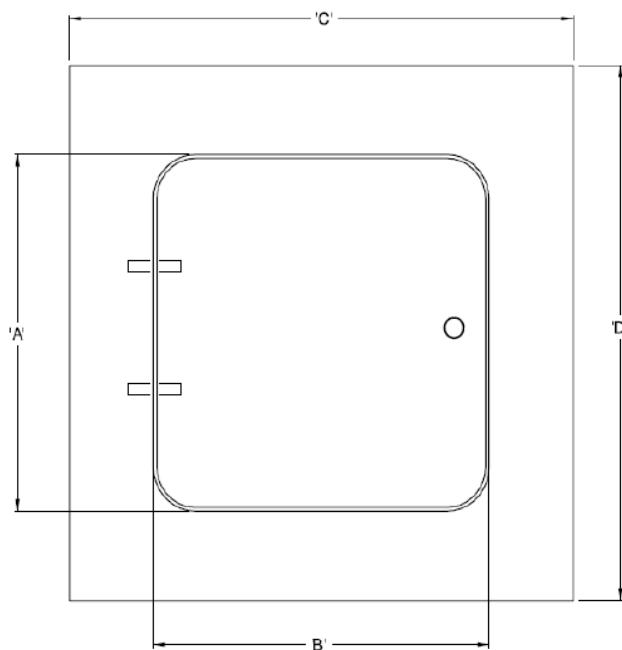
This drawing is the property of Wind-lock® Corp and shall not be reproduced, copied, lent or disposed of directly or indirectly nor used for any purpose other than that for which it is specifically furnished. Reproduction or use of this document without written permission of Wind-lock Corp® is illegal and will be prosecuted under the law.

Hinged Stealth Panel Submittal Form



STEALTH[®] Distributed By:
ACCESS PANELS BY WIND-LOCK

Qty	Access Opening	A	B	C	D
	9" x 9"	9"	9"	15"	15"
	12" x 12"	12"	12"	18"	18"
	16" x 16"	16"	16"	22"	22"
	18" x 18"	18"	18"	24"	24"
	24" x 24"	24"	24"	30"	30"

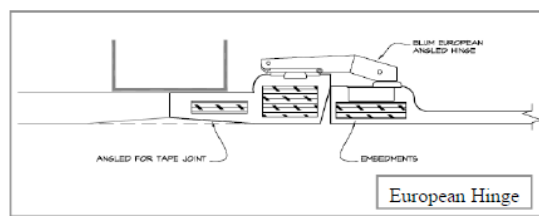
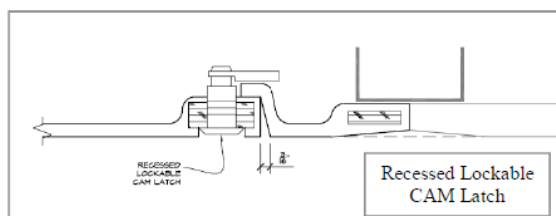


JOB NAME:

APPROVED BY:

CUSTOMER:

DATE:



Stealth Access Panels by Wind-lock[®] are made of GFRG (glass fiber reinforced gypsum) and consist of a surround frame with wood embedment and pre-spotted drill holes that take the guesswork out of installation. The 12x12 and smaller have an innovative Soss Hinge, the 16x16 and larger have flat European Hinged. Both have a recessed lockable CAM Latch.

This submittal is the property of Wind-lock[®] Corp and shall not be reproduced, copied, lent or disposed of directly or indirectly nor used for any purpose other than that for which it is specifically furnished. Reproduction or use of this document without written permission of Wind-lock Corp[®] is illegal and will be prosecuted under the law.

BASIC CARE AND INSTALLATION INSTRUCTIONS

◀ Basic information: Keep the frame and door together. If you need to separate the panel from the frame be sure to mark it to match the frame it came with and store in a safe area (see storage).

◀ Storage: Store all panels vertically in a safe, cool, dry place.



◀ Round Stealth Panel Installation: Be sure the door is in the frame during installation or above the frame while installing the frame. The door will not fit into the frame once the drywall is in place.

◀ Installation: Additional framing required. Install with a #6 bugle head screw using pre-spotted screw holes. Joints are taped with standard drywall tape and joint compound.





Rev. August 2009
Page 1

Stealth Access Panel by Wind-lock®
(For Interior Applications)

1.0 General

Scope:

Furnish all materials, labor, equipment and related services necessary to supply and erect Stealth Access Panel units as indicated in the contract documents and in compliance with local codes.

Related Sections:

Section 03490 – Glass Fiber Reinforced Concrete
Section 05500 – Metal Fabrications
Section 06100 – Rough Carpentry
Section 06610 – Glass Fiber Reinforced Plastic Fabrications
Section 09900 – Paints and Coatings

Responsibility:

The gypsum drywall contractor shall install and tape the work under this section and will be responsible for coordinating the installation with gypsum drywall work and other trades.

Manufacturers:

Contract Manufactured for:
Wind-lock Corp.
1055 Leisch's Bridge Rd
Leesport, PA 19533
P. 610-926-6815 F. 610-926-5997
www.wind-lock.com

Samples and Submittals:

Submit under provisions of Section 01300.

Stealth Access Panel by Wind-lock®
(For Interior Applications)

Product Data: Manufacturer's data sheets on each product to be used, including dimensions, finishes, storage and handling requirements and recommendations, and installation recommendations.

Shop Drawings: Provide drawings showing dimensions, joint details.

Samples: Two samples, minimum size 12 inches (300 mm) square, representing actual product, color and patterns.

Substitutions:

Not permitted

2. Request for substitutions will be considered in accordance with provisions of Section 01600

Products

2.1 Materials:

- A. Stealth Access Panel units shall be prefabricated with high-density gypsum, reinforced with continuous random filament glass fiber mat and structural reinforcing as required.

Glass Content: 5 to 6 percent by weight

Density: 103 to 112 pcf

Shell Thickness: 1/8 to 3/16 inch (3 to 5 mm) nominal

Flammability: Flame Spread Index of 0

Smoke Development Index of 0

Flexural Strength: 300-4000 PSI

Compressive Strength: 7600 PSI

Hardness (Barcol) 50

Impact Resistance 8.0 ft.-lb./in.2

Tolerances (Fabrication):

Dimensional – all directions

+/- 1/8"

Thickness – skin

+ 1/16"/-0

Thickness – total unit

+/- 1/8"

Warpage or bowing

+/- 1/16" per ft.

Stealth Access Panel by Wind-lock®
(For Interior Applications)

Execution**3.1 Examination:**

1. Do not begin installation until substrates have been properly constructed; verify that substrates are plumb and true.

If substrate preparation is responsibility of another installer, notify architect of unsatisfactory conditions before proceeding.

Check field dimensions before beginning installation.

3.2 Preparation:

Clean surface thoroughly prior to installation.

2. Prepare surfaces using methods recommended by the manufacturer for achieving the best result for the substrate under project conditions.
3. Install supplementary and permanent supports as required for proper installation.

3.3 Installation:

1. Install in accordance with applicable code and manufacturer's recommendations, plumb and true to line, shim where necessary.

Coordinate work with related gypsum wallboard work and framing.

Install Stealth Frame with #6 buglehead screws in countersunk holes in frame.

Finish joints as specified for adjacent gypsum board work in Section 09260.

Finish joints and surfaces as required for Level 5 in ASTM C 840.

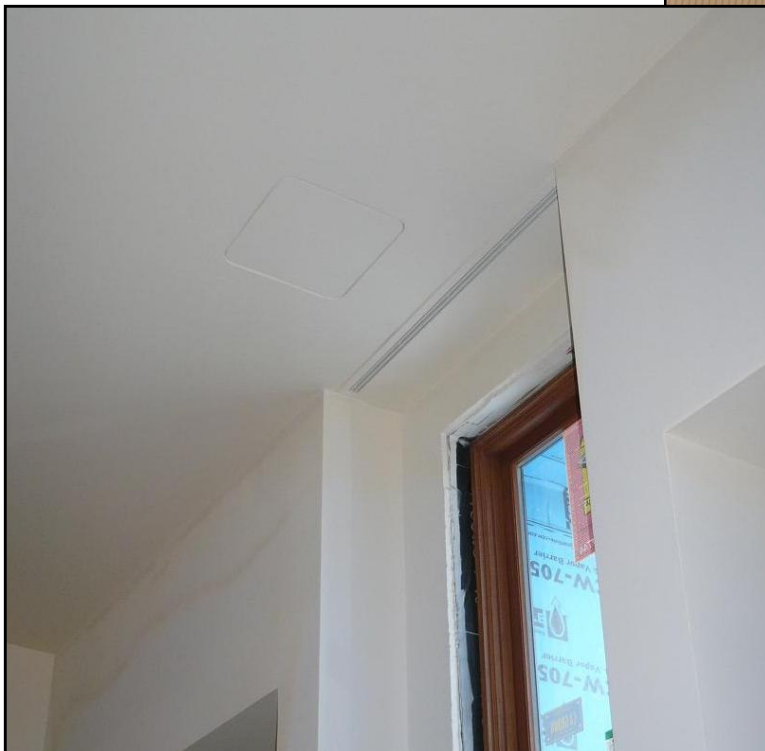
Stealth Access Panel by Wind-lock®
(For Interior Applications)

3.4 Protection:

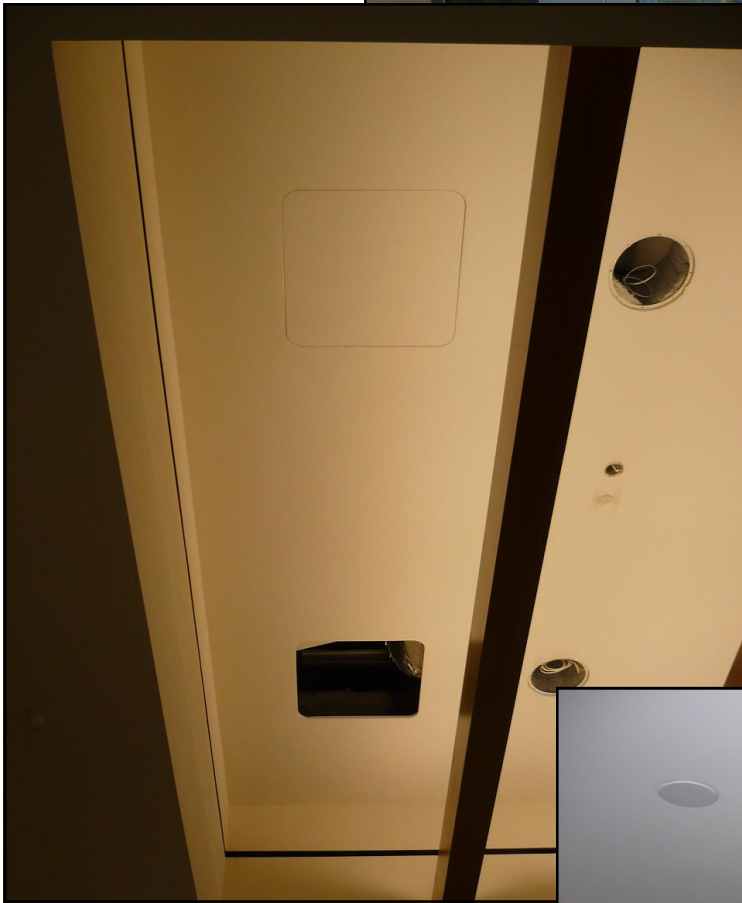
1. Protect installed products until completion of project.
2. Touch-up, repair or replace damaged products before substantial completion.

END OF SECTION

Finished Projects



Finished Projects





Name: _____
Company: _____
Bill to Address: _____
City: _____
State/Zip: _____
Phone: _____
Fax: _____
Email: _____

Please check the box that applies:

Distributor: ☐

Contractor: ☐

Homeowner: ☐

Item/Part Code	Product Description	Qty
Standard Stealth		
TR-AP009	Stealth Access Panel 9x9	
TR-AP012	Stealth Access Panel 12x12	
TR-AP016	Stealth Access Panel 16x16	
TR-AP018	Stealth Access Panel 18x18	
TR-AP024	Stealth Access Panel 24x24	
TR-APGR2230	Stealth Access Panel-Residential w/ Gasket 22x30	
TR-APGR3030	Stealth Access Panel-Residential w/ Gasket 30x30	
Hinged Stealth		
TR-HAP009	Hinged Stealth Access Panel 9x9	
TR-HAP012	Hinged Stealth Access Panel 12x12	
TR-HAP016	Hinged Stealth Access Panel 16x16	
TR-HAP018	Hinged Stealth Access Panel 18x18	
TR-HAP024	Hinged Stealth Access Panel 24x24	
Round Stealth		
TR-RAP012	Round Stealth Access Panel 12x12	
TR-RAP016	Round Stealth Access Panel 16x16	
TR-RAP018	Round Stealth Access Panel 18x18	
TR-RAP024	Round Stealth Access Panel 24x24	
Custom Stealth		
	Insert Dimensions here	
Wind-lock PL		
TR-PD46	Plastic Access Door 4x6	
TR-PD69	Plastic Access Door 6x9	
TR-PD88	Plastic Access Door 8x8	
TR-PD1212	Plastic Access Door 12x12	
TR-PD1414	Plastic Access Door 14x14	
TR-PD2222	Plastic Access Door 22x22	
TR-PD1429	Plastic Access Door 14x29	

How would you like to be contacted (circle one)?

Email

Phone

Fax

Email or Fax your request for pricing to Wind-lock Corp and we will contact you with your detailed quote.

Email: tara.loftus@wind-lock.com

Fax: 1-800-854-6614